

## Department of Physician Assistant

### Facilities

Department is facilitated with Classes are held in the University and in hospitals by the professionals .There are an existing class room with facilities for modern technological learning methods - Slide Projectors, Power point presentations. The department has a library facility also.

### Anatomical models

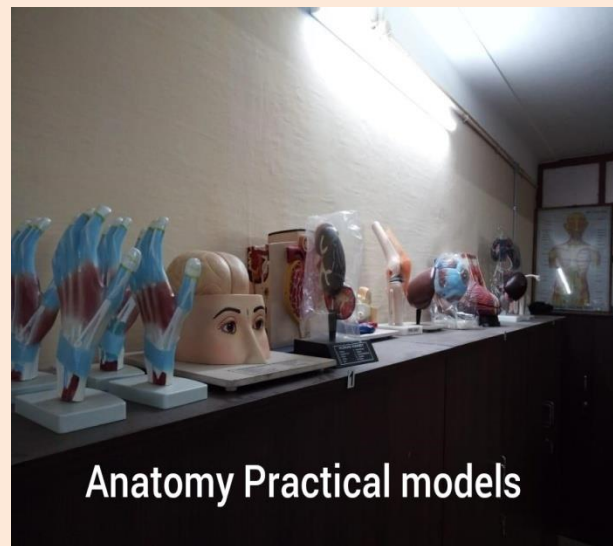
- Human models: for the understanding and betterment of knowledge for the students regarding human anatomy and its structural arrangement.
- Skeletal models: to facilitate the anatomical characteristics of the human skeletal system and its organization.

### Equipment

- Various medical devices to facilitate to the knowledge of operating and handling the apparatus in clinical settings.
- Sphygmomanometer, Stethoscope, Pulse oxymeter, Glucometer, Hemoglobinometer, fat measuring apparatus, BMI calculator, etc are provided for practical classes for the students to know the use of the apparatus in hospitals settings.

### Laboratory

- The simulation learning takes place in the well-equipped laboratories with extensive range of high end technology for subjects such as Fundamentals of Computers, Nutrition, Hospital administration, Bio medical Instrumentation, Anatomy and other fields.



**Peripheral nervous system**



**Clinical model-limbic system**



**Classroom -1**



**Clinical model-limbic system**

